

The little ones Crown

Sewing tips & tutorial



Contents

Before you get started	3
Materials, recommendations, tips	
How to use this pattern	4
Sizes, printing	
Safety info & Policy	5
Sewing instructions	6
Step by step photos and instructions	

Before you get started

Materials you need

Fabric

Woven fabric is recommended.
Cotton, linen or a linen/cotton mix.

In this tutorial canvas (225 gsm) and calico (150 gsm) is used.

Depending on size, consumption is:
- 2x 18,5 x 4,5 cm (7.3 x 1.8") for standard.
- 2x 23,5 x 6 cm (9.3 x 2.4") for 35 cm size.

Twill tape with a width of 1 cm (3/8")

For the standard size: 2 x 7.5 cm (3")
For the bigger size: 2 x 9.5 cm (3.8")

Sewing thread

100% polyester thread (for strength).
Using a reliable brand is recommended, like Gutermann or Mettler, both offer a great recycled options too (Gutermann rpet and Mettler seracycle).

Printed pattern

Can be found in a separate document.

Hook and loop tape

Sewing machine

Sewing machine needle

Choose a needle that matches your fabric choice.

Fabric marker

The air or heat ones, like kearing or pilot frixion colors.

Fabric scissors

Smaller pair of scissors

For cutting excess thread.

Pinking shears (optional)

Turning tool

A chopstick could already do the trick.

Iron

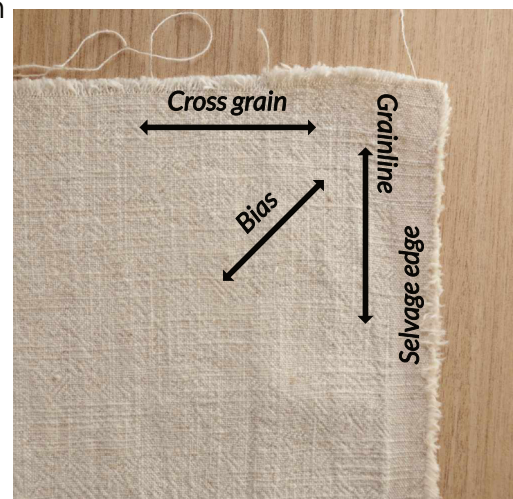
Seam ripper

Clips or pins

Ruler

Tips for the best results:

- Pre-wash your fabric to prevent unwanted shrinkage later on and iron before tracing the pattern.
- Woven fabrics tend to fray. Using pinking shears can help a little when trimming the seam allowance.
- When using fabrics on the lighter side they might need some reinforcing to increase strength and stability. You can add a layer of calico or a layer of lightweight fusible interfacing.
- Use a shorter stitch length (2) to create small shapes and a strong seam.
- Go slow when sewing small shapes so you're able to pivot in time.
- Pay close attention to how you place pattern piece. Each one has an arrow that should be lined up with the grainline of your fabric.



How to use this pattern

The little ones dolls come in a standard size (25 cm 9.9") and bigger size (35 cm 13.8"). For both sizes you can find a crown pattern in a separate document to print at home.

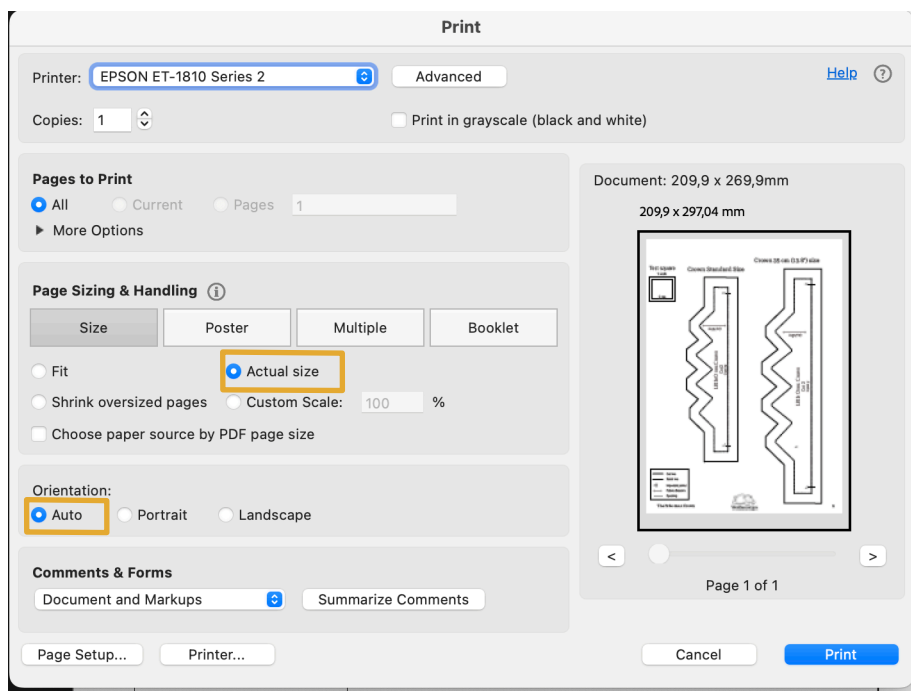


How to Print

Open the pattern file with Adobe Reader. Start by printing the page to check if the measurements are correct by measuring the test square.

To print:

- Go to File > Print
- Under Page Sizing & Handling select Actual size
- Under Orientation select Auto
- Hit the Print button



Safety info & Policy

Warning: *doll clothes and accessories made using this pattern are not suitable for children under the age of 3. Contains small parts/cords.*

Routinely check your handmade item for any signs of damage or loose threads as this may cause harm.

Things to look for to increase safety of your handmade item:

- Fabric choice: fabrics and their production can contain harmful substances. When shopping for fabrics look or ask for OEKO-TEX® STANDARD 100. Every item made with a fabric that carries this label is certified as having passed safety tests for the presence of harmful substances. Class 1, with the strictest criteria is mandatory for products created for babies and toddlers.
- Cords/ribbons: ribbons, cords and ties can pose a strangulation hazard. Ensure closures can't form a slipknot by using breakaway closures like velcro.
- Hygiene: either machine or hand washable.

Terms of use

All designs, patterns, instructions and tutorials (in picture or video) are property of Wolbeestjes.

As such non of these can be shared, sold, modified, redistributed, copied or demonstrated in any manner in whole or in part.

This pattern is intended for personal use only. Not for commercial use.

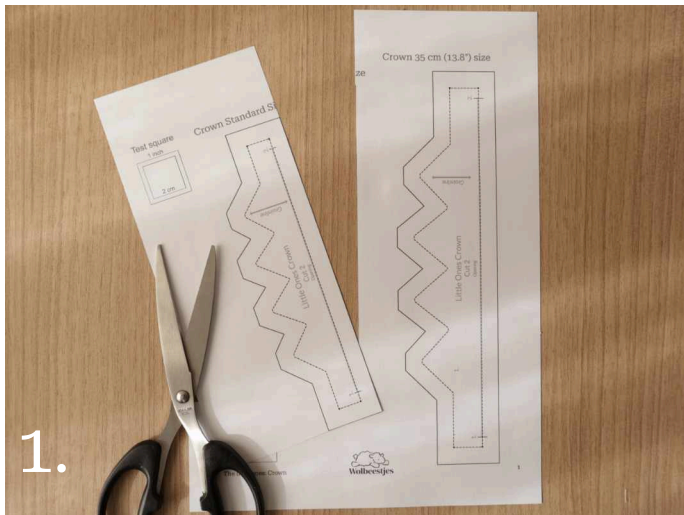
Please kindly respect my work and take advantage of it's intended use.

Enjoy the process of creating something meaningful with your own hands for yourself, your family and loved ones.

I would love to see your finished projects. Please share them on your socials and tag me (@wolbeesjes or on instagram/threads @wolbeestjes_design).

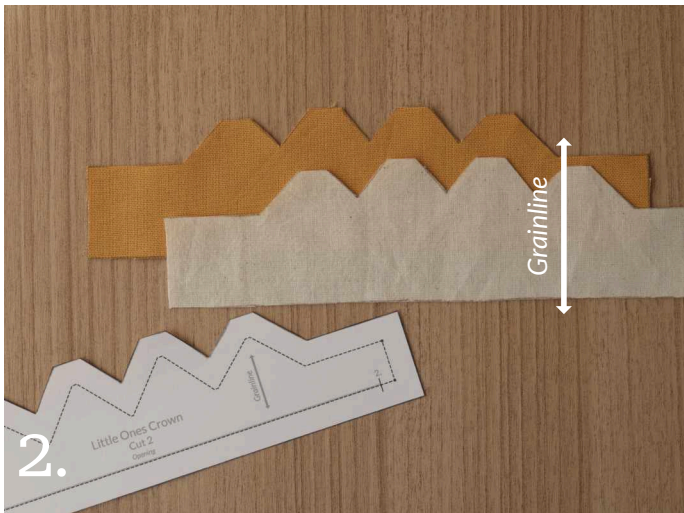
Thank you so much for this purchase. If you have any questions regarding this pattern, please feel free to reach out to me and I will be more than happy to help. Send me an email at info@wolbeestjes.com

Sewing instructions

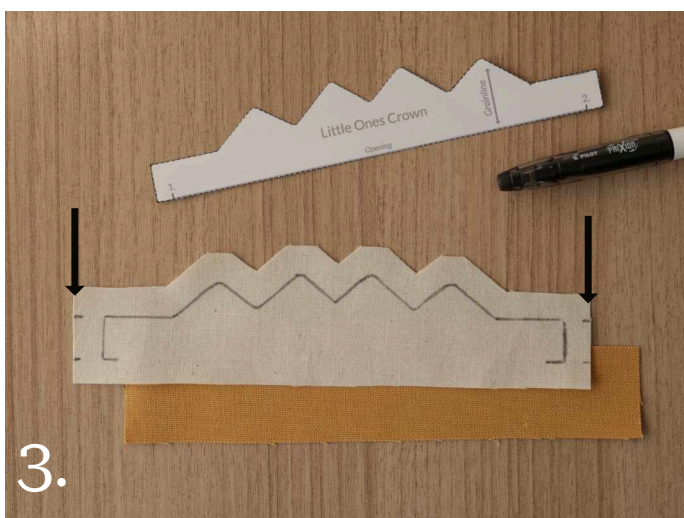


The pattern comes in two sizes.

Pick your desired size and cut out the paper pattern.



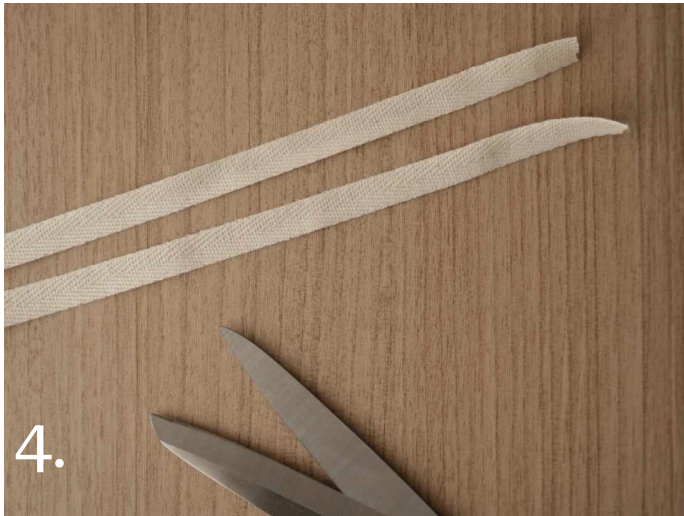
Trace the pattern piece twice and cut your fabric.



Trim the seam allowance on the paper pattern pieces.

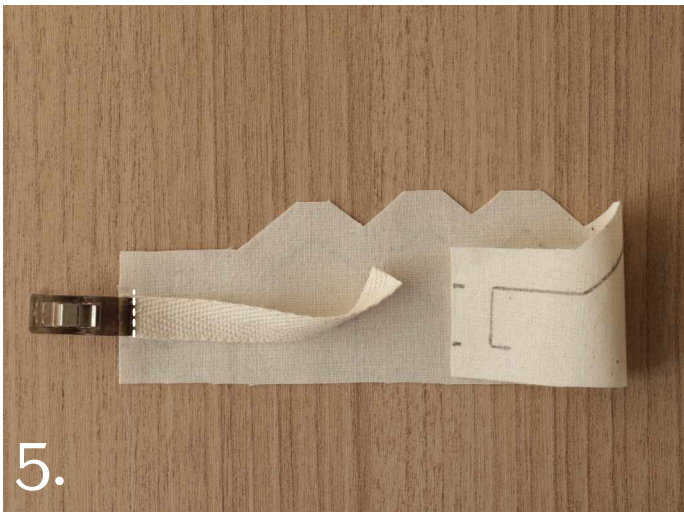
Trace the stitchline on the **wrong** side of the fabric, on one of the fabrics.

Use the dots on the paper pattern to make two markings on the edge of the fabric too. This will make placing the ribbon/tape easier.



Cut two pieces of twill tape.

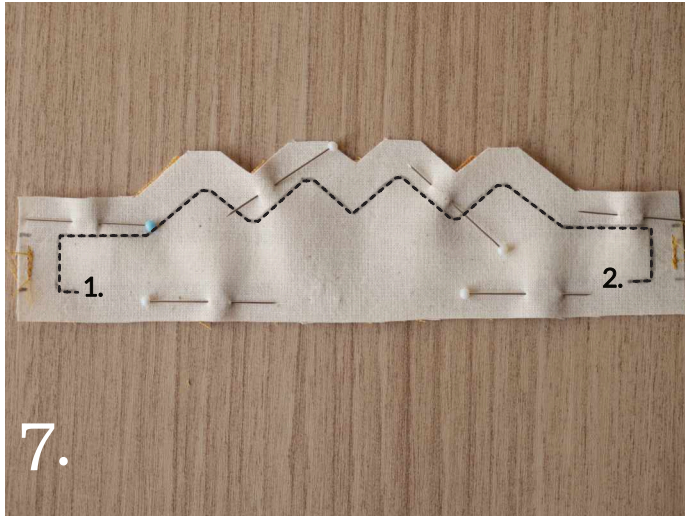
For the **standard** size: 2 x 7.5 cm (3")
 For the **bigger** size: 2 x 9.5 cm (3.8")



Place the twill tape in between the markings made earlier, on the **right** side of the fabric.
 Clip or pin in place and sew on the edge of the fabric with the right side facing up. This way the tape won't shift later on.



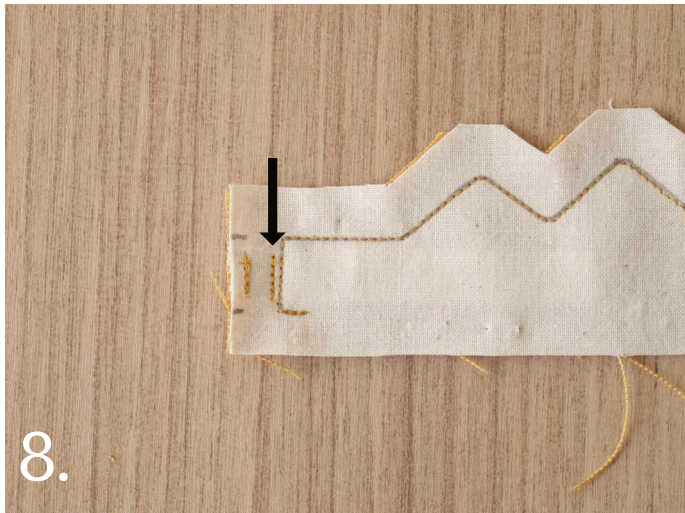
This is what it should look like on the **right** side of the fabric.



Pin the fabrics **right** sides together. Check if the tape is neatly tucked inside so it won't get caught on your stitchline. Sew from point 1 to 2. Always backstitch at the beginning and end, unless mentioned otherwise.

To make sure the points and dips on the crown look nice, make one stitch that is parallel to the bottom of the crown everytime you pivot.

Leave the bottom open to flip the crown right side out later on.



For extra security add a smaller stitchline right next to your stitchline on the side as pictured.

Iron the fabric to set your stitches.



Cut the seam allowance at 0.6 cm (1/4") with pinking shears or clip as pictured. Be careful not to clip into your stitchline.



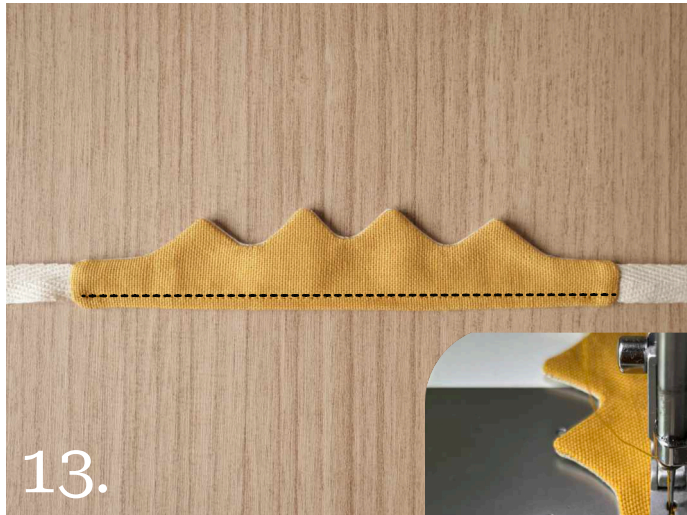
Turn the crown right side out through the opening on the bottom.
Use a chopstick to carefully smooth everything out.



Fold both of the bottom seam allowances inside the crown and give it a press with an iron.



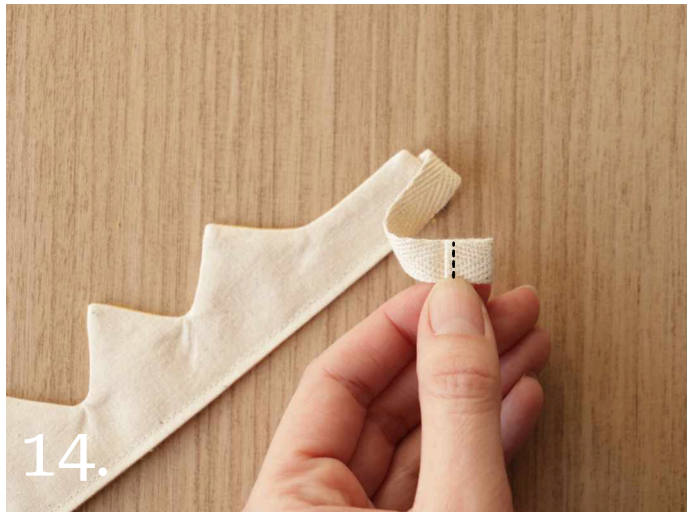
We're about to close the crown.
If you are using two different colors and want matching thread on both sides, change your bobbin thread to a different shade.



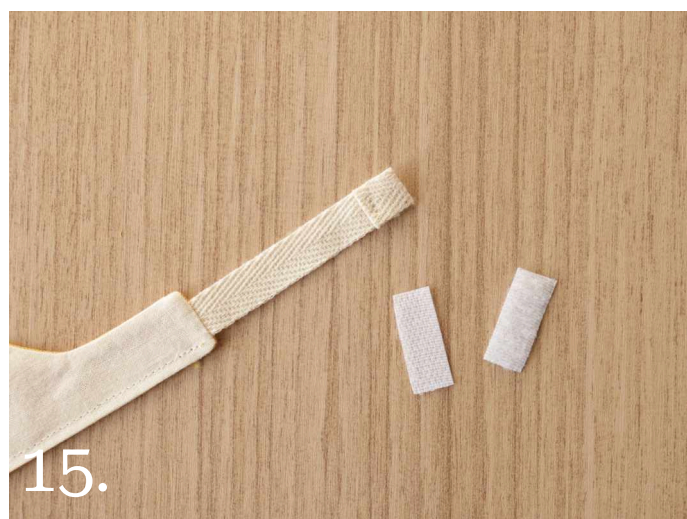
To close the opening, sew along the bottom very close to the edge.

If your machine has a zigzag function, you can move your needle to the right and line up the fabric with the edge of the presser foot.

Personally I align the edge of the fabric with the middle of the foot as pictured.



Fold the end of the tape twice (1 cm or 3/8") and sew from top to bottom. Repeat for the other end.



Cut a piece of hook and loop tape, measuring 2,5 x 1 cm (1 x 0.4 ").



Align both tapes with the edge of the twill tape and sew.
 One side of the hook and loop tape goes on the **right** side and the other goes on the **wrong** side as pictured.
 I prefer to put the hooks (rougher side) on the right side so it won't get stuck on the fabric of the doll.



The crown is all done now and ready for wearing!



I would love to see your creations. Please share them on socials and tag me (@wolbeestjes or @wolbeestjes_design on instagram).